

# MDPA News

November 2013

Concord, CA

[webmaster@mdpa.org](mailto:webmaster@mdpa.org)

Volume 42 Issue 11

## Calendar – November 2013

|                    |          |                                     |
|--------------------|----------|-------------------------------------|
| <b>November 2</b>  | 9:00 AM  | <b>Breakfast and Safety Meeting</b> |
| <b>November 2</b>  | 11:00 AM | <b>Fly-out to Santa Rosa</b>        |
| <b>November 15</b> | 6:30 PM  | <b>Dinner</b>                       |

Dear Aviators and Aviation Enthusiasts,

The Hayward Air Rally is celebrating its 50th Year Anniversary in 2014 by staging a 3-day Rally from Hayward California to Madison Wisconsin and then on to AirVenture in Oshkosh Wisconsin.

The Rally impound and briefing will be held on July 23, 2014. We will depart Hayward on the morning of July 24, 2014 and arrive in Madison Wisconsin, with two overnight stops in between, on the afternoon of July 26, 2014. We will fly into Oshkosh as a group on July 27, 2014. AirVenture opens on July 28, 2014.

The Rally accepts aircraft with traditional instruments and aircraft with glass panels. Pilots of all skill levels are welcome. Visit our website for more information at

<http://www.hwdairrally.org/index.shtml> or you may contact:

Chris Verbil  
Chair, Hayward Air Rally Committee  
[www.hwdairrally.org](http://www.hwdairrally.org)  
408.533.9357 office  
408.757.3426 cell  
Twitter: @hwdairrally  
Facebook: Hayward Air Rally

The Hayward Air Rally is a 501(c)3 non-profit organization whose purpose is to promote aviation safety and education. The Hayward Air Rally will award 7 scholarships to the EAA Air Academy in 2014.

Mike Citro  
[mcitro@mtcinnovations.com](mailto:mcitro@mtcinnovations.com)  
1-925-628-0462  
1-925-625-9636

## INSIDE THIS ISSUE

- 1 Hayward Air Rally Information
- 2 Fly-out Calendar for November and December 2013
- 4-7 Photos of Casino Night October 18, 2013
- 8 **Valuable PSA ad**

## Fly-out Destinations for October, November and December 2013

**November 2, 2013**

**STS**

**Santa Rosa**

**AIRPORT:** Sonoma County Santa Rosa

**DISTANCE:** 47.3 nm NW

**RESTAURANT:** Sky Lounge 707-542-9400

**HOURS on Saturday:** 7:30 AM- 10:00 PM

**ADDL INFO:** The restaurant is a steak house and sushi bar.

**December 7, 2013**

**WVI**

**Watsonville**

**AIRPORT:** Watsonville

**DISTANCE:** 64.5 nm SSE

**RESTAURANT:** Props Restaurant & Lounge 831-724-7767

**HOURS on Saturday:** 11:00 AM- 10:00 PM

**ADDL INFO:** Reopened in August 2012, the restaurant serves traditional (American) food.

### Mt. Diablo Pilots Association Mission Statement

The Mount Diablo Pilots' Association is a non-profit organization based at Buchanan field in Concord, California (KCCR). There are many benefits to joining the club. The purposes of the Mount Diablo Pilots' Association are:

- To promote good public relations between general aviation enthusiasts and the local community.
- To encourage participation in fly-ins and other aviation activities.
- To promote safety and educational activities for pilots.
- To provide mutual resources of information on flying for members.
- To furnish information and support to the Contra Costa Airport Advisory Committee and other governmental agencies concerned with aviation.
- To be a proxy on aviation matters of community concern for its membership.

MDPA Mailing Address: P.O. Box 6632

Concord, CA. 94524

President

Stewart Bowers

[President@mdpa.org](mailto:President@mdpa.org)

VP Activities

Natasha Doktorova

[VPActivities@mpda.org](mailto:VPActivities@mpda.org)

VP Programs

Steve Mink

[Programs@mdpa.org](mailto:Programs@mdpa.org)

Treasurer

David Thacker

[Treasurer@mdpa.org](mailto:Treasurer@mdpa.org)

Facilities Maintenance

Stewart Bowers

[Facilities@mdpa.org](mailto:Facilities@mdpa.org)

Secretary

Elaine Yeary

[Secretary@mdpa.org](mailto:Secretary@mdpa.org)

Director at Large

Scott Achelis

[Atlarge@mdpa.org](mailto:Atlarge@mdpa.org)

Past President

Maureen Bell

[Pastpres@mdpa.org](mailto:Pastpres@mdpa.org)

Communications

Madeleine Ferguson

[Communications@mdpa.org](mailto:Communications@mdpa.org)

Articles and photos

For the newsletter

[Newsletter@mdpa.org](mailto:Newsletter@mdpa.org)

Aviation Advisory Committee

Russ Roe

The MDPA Clubhouse is on the west side of the airport, south of the airport manager's office.

**200 Sally Ride Drive**

**Concord, CA 94520**

**Win fuel or simulator time !!  
See the ad from PSA on page 8**

Casino Night October 18, 2013



Casino Night October 18, 2013

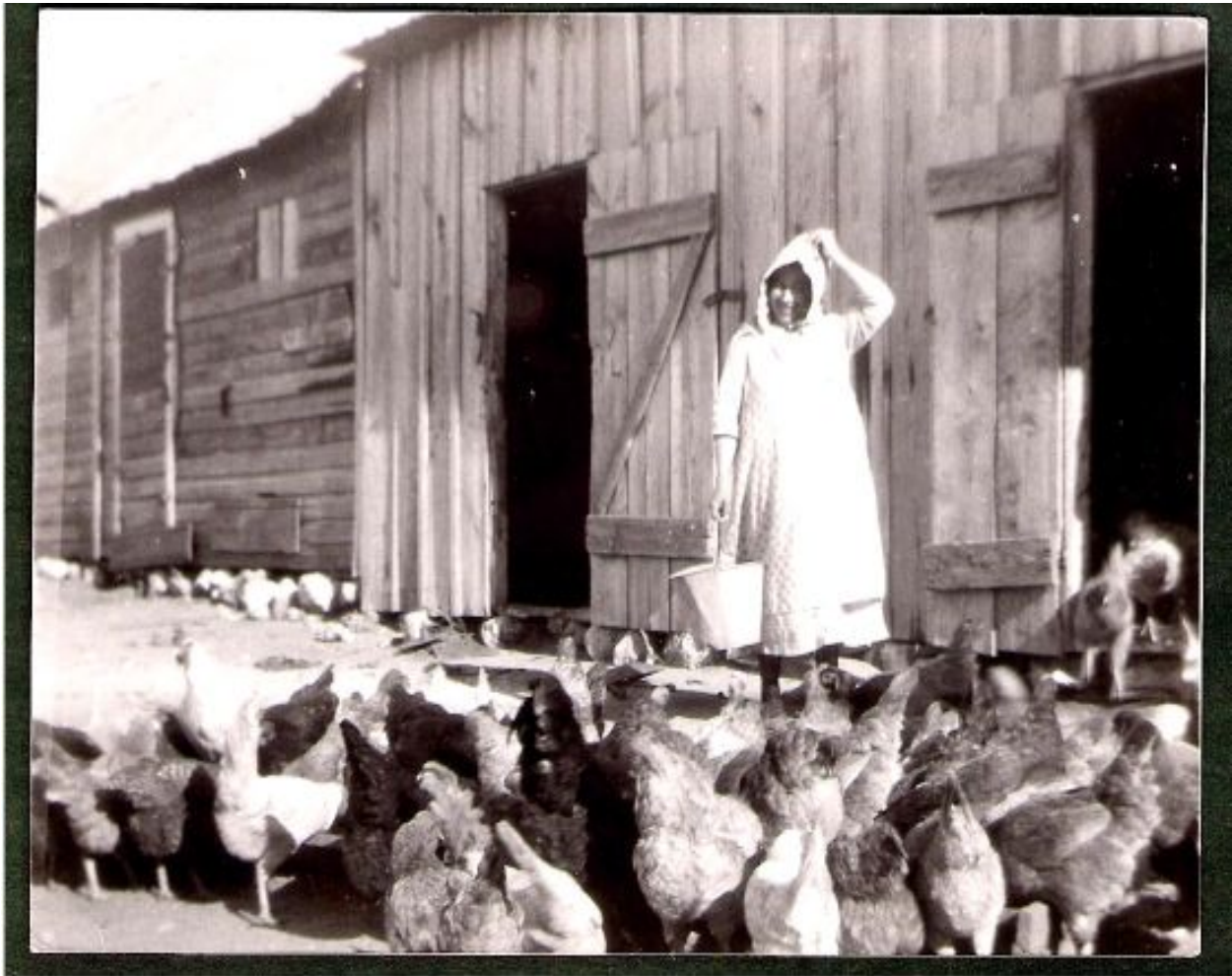


Casino Night October 18, 2013



Casino Night October 18, 2013





PSA

**Win 5 (five) gallons of gas or  
.5 hours (one half hour) in the simulator.**

Be the first 3 (three) persons to call PSA with the correct  
number of turkeys in the picture above.

Happy Thanksgiving from Pacific States Aviation